

BLUE CHAMELEON : General Interface

For links outside this document,

*download the relevant chapter or the **Blue Chameleon Full Documentation**.*

December 19, 2013

Chapter 1

General Interface Handling

In this Chapter, you are going to know everything you need to personalize Blue Chameleon to your needs.

Blue Chameleon's screen, as displayed upon login on our site, is featured at Fig.1.1.

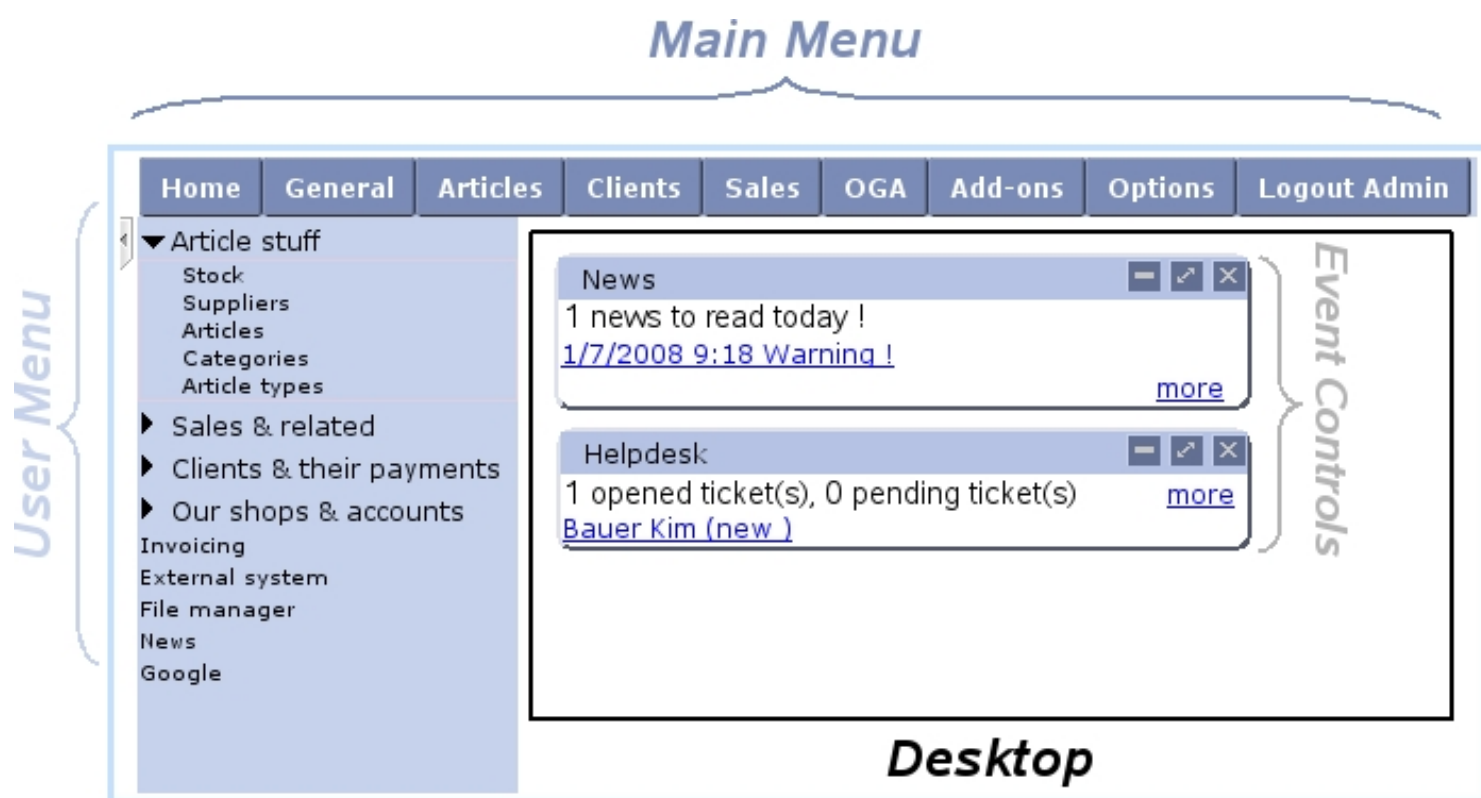


Figure 1.1: Blue Chameleon's screen.

It is composed of :

- a Main Menu, made of *command groups* that represent Blue Chameleon's main components : articles, clients, accounting,... ;

- a User Menu, which is built from Main Menu items according to the user's particular needs ;
- a Desktop, which is where *Pages* display, forms are filled, actions are taken... it is also where, upon login, Event Controls (see 1.3) are displayed.

1.1 Writing conventions and main menu basics

In this document, a command group will be referred as **Command group**. Except for **Home** and **Logout** command groups, clicking on a command group generally displays a submenu with several choices, as shown on Fig.1.2 with for instance the **Articles** command group.

Clicking on one of these choices then leads to a page that displays in the Desktop ; for example, clicking on **Stock** (submenu elements will always be referred to as this) brings to a "Stock Management Page" where are displayed **buttons**.

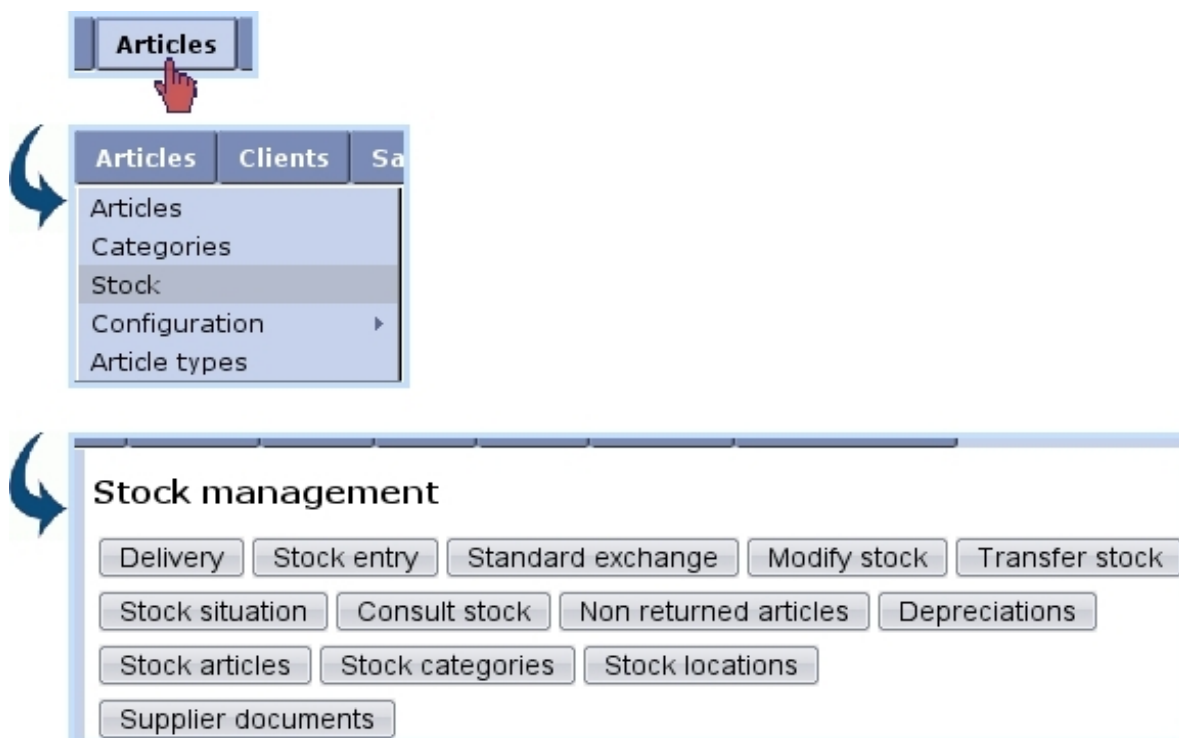


Figure 1.2: Easily accessing a page.

Clicking on any of these buttons finally leads to a dedicated page.

As a convention in this document, the path to access a specific button will be written as, for the example cited above :

Articles / **Stock** / **Consult stock**

Throughout this manual, these color conventions will always be complied to so that no place is left for ambiguity, whenever a submenu element shows another submenu (for instance **General** / **Users** / **User rights**) or a page needs a succession of button clicks to be accessed (for instance **Add-ons** / **News** / **Publish** / **Add news**).

Also, click-links in Blue Chameleon (that generally leading to a detail/description page related to a client, an article,...) will be referred to as, for example, [Smith John](#).

Expressions written inbetween [...] refer to a context : [HOME],... or to an accomplished action : [Client Search],...

It is finally possible to arrange the Main Menu's items, rename them... ; an in-depth how-to on this matter is proposed at *Advanced Functions and Configuring* (12).

1.2 User Menu management

As it has been seen above, accessing a certain page may sometimes necessitate to go through several menus ; what is more, some pages are accessed far more often than others. Therefore, Blue Chameleon provides the User Menu of the main screen for you to add your most used menu elements.

1.2.1 Adding links

The configuration of the User Menu is accessed by right-clicking anywhere in it ; on subsequent menu, as featured in Fig.1.3, pick **Add link**. This will show a window with all menus and submenus, displayed/hidden by clicking on / ; then click on the menu item you want the User Menu to feature (in this example, 'Articles') and validate by **Add**.

Fig.1.4 shows for instance a User Menu designed for users that will be working mostly on article matters : clicking on 'Suppliers' then brings directly to the *Suppliers Management Page*, which would have been accessed normally via two menus (**General** / **Merchant** / **Suppliers**).

The grey arrow on the top left of the User Menu may be used to hide/show it.

1.2.2 Adding URLs

URLs can also be added through the right-click menu via **Add URL**.

[User Menu : right-click anywhere]

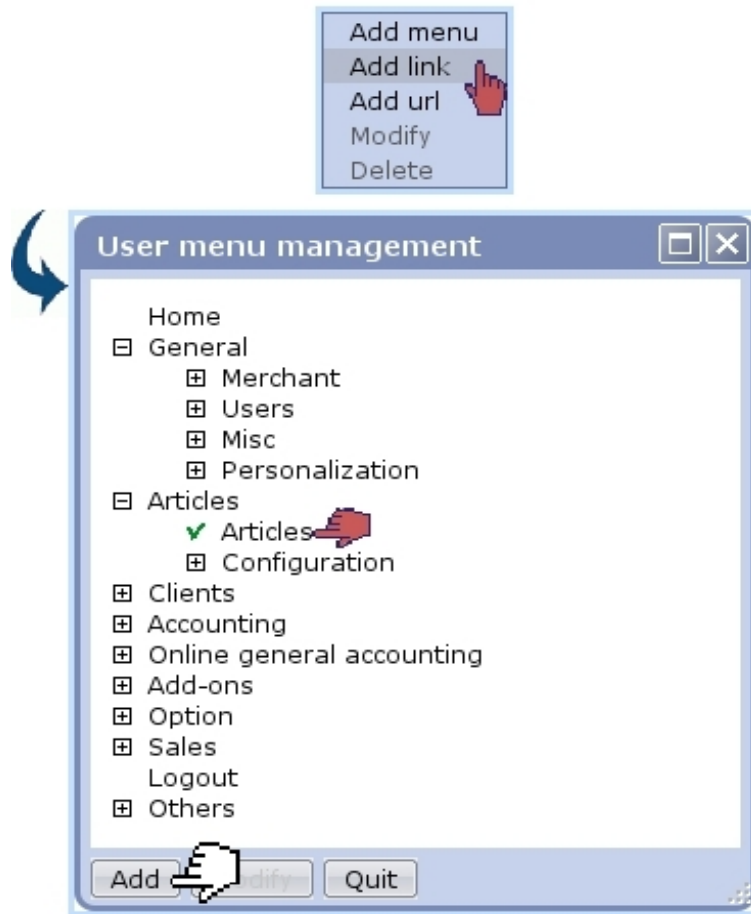


Figure 1.3: Adding the menu element 'Articles' to the User Menu.

Hide/Show User Menu



Figure 1.4: Clicking on one element of the User Menu displays the corresponding page.

1.2.3 Link management

If a link in the User Menu should be deleted, this is achieved by right-clicking on this link and picking **Delete**. Or, if a link should be better replaced by another, choose this time **Modify**: the same window as for link add will be displayed, where you can now pick the menu element that fits this place better.

Finally, a link can be displaced by holding a click on this link and moving it to the wanted place.

1.2.4 Adding menus

If you wish to gather links according to their function, it is possible to create a menu to do so. This may seem to eventually achieve the same result as the Main Menu and its submenus, but as a matter of fact, you can now group some related menu elements that did not belong to the same command group.

For instance, 'Suppliers' may be useful in the context of 'Stock' (as adding a stock article requires a supplier to be defined), but they belong respectively to the **General** and **Articles** command groups. They could therefore be gathered into a 'Article stuff' side menu, whose creation is shown at Fig.1.5 ; **Add menu** is this time what to choose from a right-click on the User Menu zone, and the new menu's name is validated with the return key.

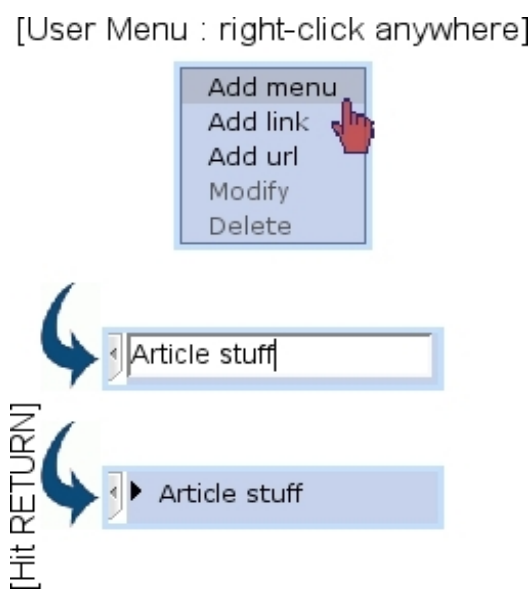


Figure 1.5: The creation of a User Menu menu called 'Article Stuff'.

Then, links are added inside this menu in a similar way as described in 1.2.1, but this time the right-click is done *on* the menu's name. A menu's contents are displayed/hidden by clicking on **▶**/**▼** on the left of its name.

Fig.1.6 finally shows the end result of creating a few menus.

Similarly as for links, User Menu menus can be deleted (provided they do not contain any link), modified and moved.



Figure 1.6: An example of what can be achieved with User Menu menus.

1.3 Event Controls

Event Controls are designed to display miscellaneous information as a user logs in on her/his Blue Chameleon account or clicks on **Home**. They come in particularly handy for :

- domiciliation orders to be activated ('Billboard', 5.10.5.1) ;
- news (7.1) ;
- the current day's appointments (7.2) ;
- alarms (7.3) ;
- if applicable the Customer Relationship Manager's actions (7.9.4) ;
- employees' vacation requests (7.11.5.7) ;
- incoming tickets (8) ;
- system tasks (9.8).

1.3.1 Setting up Event Controls

Blue Chameleon lets you pick which Event Controls you wish to be displayed ; to do so, follow **Options** / **Configure desktop**. On subsequent screen as shown at Fig.1.7, tick the corresponding Event Controls.

For instance, the result of an incoming news message can be seen at Fig.7.4.

1.3.2 Managing Event Controls

Most of the following functions are accessible from the top right of that Event Control and/or through event Control menu, as displayed when right-clicking when cursor is over an Event Control's blue top.

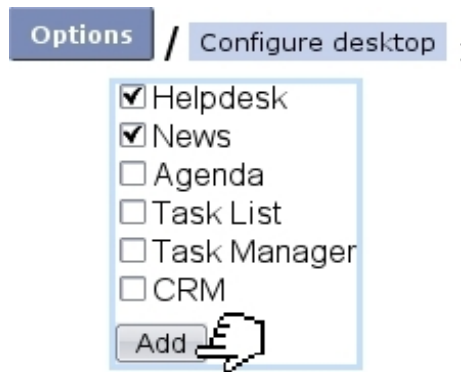


Figure 1.7: Setting the display with 'Helpdesk' and 'News' Event Controls.

1.3.2.1 Displacing

A single click on the blue-hued top of an Event Control and then a single click on a free zone of the Desktop (or even in-between two event controls) simply displaces it there.

1.3.2.2 Minimizing / Maximizing

In order to hide the contents of an Event Control on the whole Blue Chameleon Desktop, click on **Minimize** on the top right of that Event Control. They can then be shown again via **Maximize**. Or, through the right-click menu, click on either **Minimize** or **Maximize**.

1.3.2.3 Closing

In order to disable the displaying of an Event Control on the Blue Chameleon Desktop, click on **×** on the top right of that Event Control, or click on **Close** on the right-click menu.

Another way of achieving this is to simply untick (*work in progress*) the corresponding Event Control from the **Options / Configure desktop** page.

1.3.2.4 Full-desktop display

In order to display the contents of an Event Control on the whole Blue Chameleon Desktop, click on **☑** on the top right of that Event Control.

1.3.2.5 Event Control menu options

Options, as found on the right-click menu of an Event Control, brings the pop-up as displayed on Fig.1.8 where :

- the "coordinates" of the event control are displayed ('column 1' or '2' meaning whether event control is on the left or right side of the Desktop, 'line' telling how low event control is in that column, starting from 1 (top)) ;

- the dimensions (in pixels) of the event control are displayed ; width is fixed at '0' (meaning half of the Desktop) and height can be modified, set by default at 0, i.e. the minimum height that embeds the event control's contents ;
- the status of the event control, 'Maximized' or 'Minimized' (1.3.2.2) is shown ;
- the title of the even control can be altered.

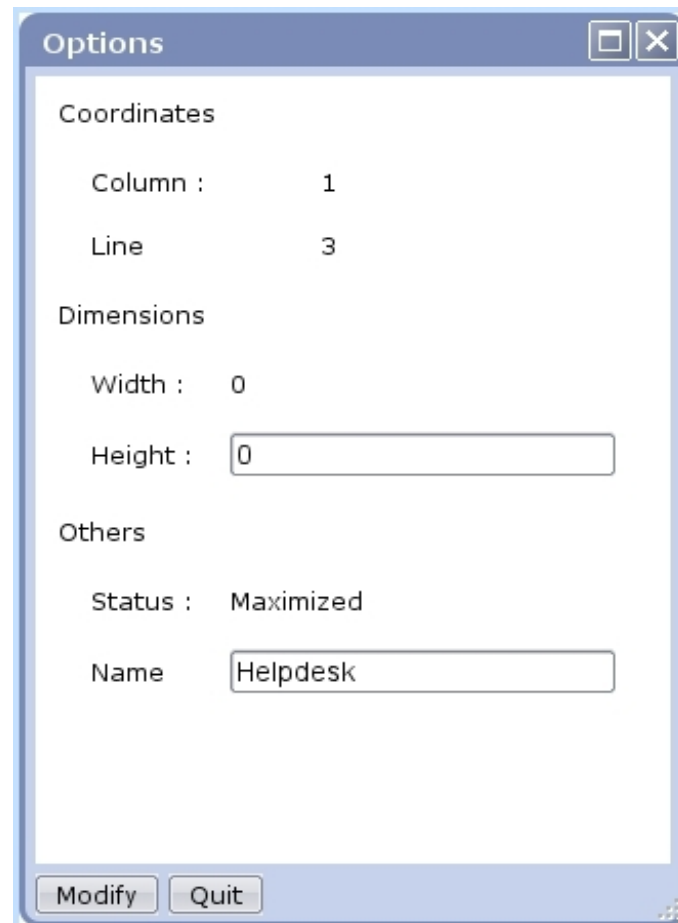


Figure 1.8: This pop-up enables to fix an Event Control's name and height.